

# ZISA OP3608 8Ports GPON Cassette OLT



**High Performance 8ports GPON OLT, 8xGE or 2\*10G SFP+ uplink**

## Product Overview

OP3608 is a small capacity and enhancement mode cassette GPON OLT, meeting the requirements of *ITU-T G.984/G.988* and relative standards of *Telecom level GPON*, possessing super GPON access capacity, carrier-class reliability and the complete security function. It can satisfy long-distance optical fiber access requirement on account of its excellent management, maintenance and monitoring capability, abundant service features and flexible network mode. OP3608 can be used via CLI and SNMP network management system so as to provide users with the perfect solution.

OP3608 provides 8 downlink GPON port, 8 \*GE combo port or 2\* 10G SFP+ port. Single PON port can manage 128 ONUs, one pcs OP3608 max to 1024 ONUs. The height is only 1U for easy installation and space saving. OP3608 is suitable for Broadcast *three in one*, video surveillance network, enterprise LAN, Internet of Things, etc. FTTH network.

## OP3608



- ☐ 1 RU19 inch
- ☐ 1+1 power redundancy
- ☐ 8\* fixed GPON port
- ☐ 8\*GE or 2\*10GE SFP+
- ☐ 1\* console port
- ☐ 2\* MGMT port

**Product Specification:**

Item	OP3608
Switching Capacity	40Gbps
Forwarding Capacity(Ipv4/Ipv6)	104MPPS
Service Port	8*PONport, 8*GE SFP, or 2*10GE SFP+ port
Redundancy Design	Dual power supply Support AC input, double DC input and AC+DC input
Power Supply	AC: input 90~264V 47/63Hz; DC: input -36V~-72V;
Power Consumption	Typical: 48W; Maximum: 72W
Dimensions (Width x Depth x Height)	440mmx44mmx340mm
Weight (Full-Loaded)	≤3kg
Environmental Requirements	Working temperature: -5°C~55°C Storage temperature: -40°C~70°C Relative humidity: 10%~90%, non-condensing

**Product Features:**

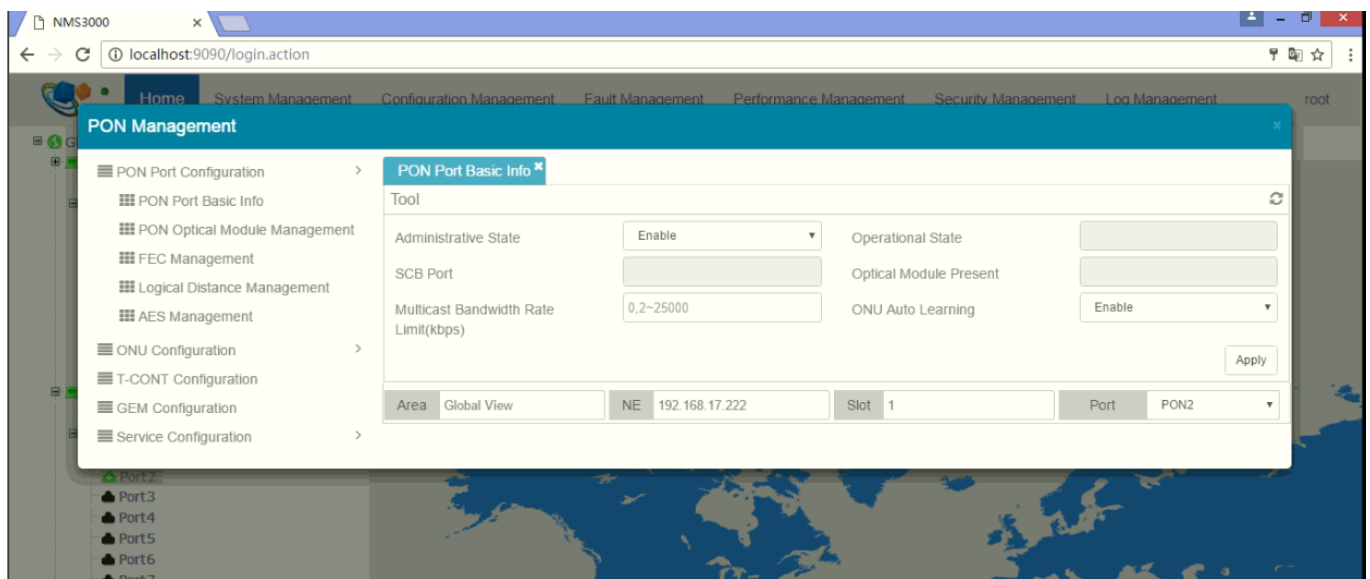
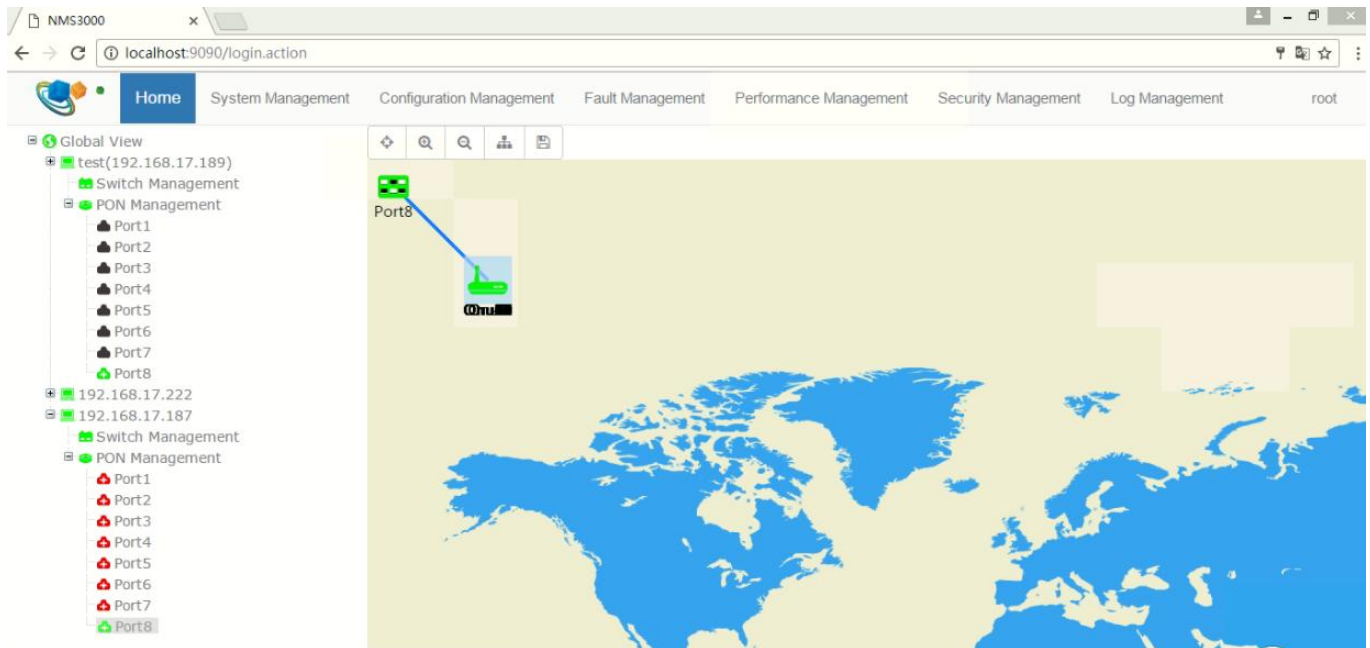
Item		OP3608
PON Features		ITU-TG.984.x standard Maximum 20 Km PON transmission distance Each PON port access 128 ONU and 1K T-CONT Uplink and downlink triple churning encrypted function with 128Bits Support of five types T-CONT bandwidth profile ONU terminal legitimacy certification, report illegal ONU registration Support of multiple ONU authentication mechanism: SN, Password, SN plus Password, Loid, LoidPassword. Support of ranging and logical distance configuration Support of upstream and downstream FEC enabling/disabling DBA algorithm, the particle is 1Kbit/s Standard OMCI management function ONU batch software upgrade, fixed time upgrade, real time upgrade PON port optical power detection
L2 Features	MAC	MAC Black Hole Port MAC Limit 64K MAC (packet exchange chip cache 2MB, external cache 720 MB )
	VLAN	4K VLAN entries Port-based/MAC-based/protocol/IP subnet-based

		<p>Support of QinQ based on port or service flow</p> <p>Support of VLAN add, remove, translate and transparent per ONU service</p> <p>PVLAN to realize port isolation and saving public-vlan resources</p> <p>GVRP</p>
	Spanning Tree	<p>STP/RSTP/MSTP</p> <p>Remote loop detecting</p>
	Port	<p>Bi-directional bandwidth control</p> <p>Static link aggregation and LACP(Link Aggregation Control Protocol)</p> <p>Port mirroring and traffic mirroring</p>
Security Features	User's Security	<p>Anti-ARP-spoofing</p> <p>Anti-ARP-flooding</p> <p>IP Source Guard create IP+VLAN+MAC+Port binding</p> <p>Port Isolation</p> <p>MAC address binding to the port and MAC address filtering</p> <p>IEEE 802.1x and AAA/Radius authentication</p>
	Device Security	<p>Anti-DOS attack(such as ARP, Synflood, Smurf, ICMP attack), ARP detection, worm and Msblaster worm attack</p> <p>SSHv2 Secure Shell</p> <p>SNMP v3 encrypted management</p> <p>Security IP login through Telnet</p> <p>Hierarchical management and password protection of users</p>
	Network Security	<p>User-based MAC and ARP traffic examination</p> <p>Restrict ARP traffic of each user and force-out user with abnormal ARP traffic</p> <p>Dynamic ARP table-based binding</p> <p>IP+VLAN+MAC+Port binding</p> <p>L2 to L7 ACL flow filtration mechanism on the 80 bytes of the head of user-defined packet</p> <p>Port-based broadcast/multicast suppression and auto-shutdown risk port</p> <p>URPF to prevent IP address counterfeit and attack</p> <p>DHCP Option82 and PPPoE+ upload user's physical location</p> <p>Plaintext authentication of OSPF, RIPv2 and BGPv4 packets and MD5</p> <p>cryptograph authentication</p>
Service Features	ACL	<p>Standard and extended ACL</p> <p>Time Range ACL</p> <p>Flow classification and flow definition based on source/destination MAC address, VLAN, 802.1p, ToS, DiffServ, source/destination IP(IPv4/IPv6) address, TCP/UDP port number, protocol type, etc</p> <p>packet filtration of L2~L7 deep to 80 bytes of IP packet head</p>
	QoS	<p>Support of rate-limit based on port or self-defined service flow</p> <p>Support of priority remark based on port or self-defined service flow and provide 802.1P, DSCP priority and Remark</p> <p>Support of QoS scheduling based on port and self-defined service flow, support of 8 priority queues, scheduler algorithm is SP, WRR, or SP plus WRR.</p>

	IPv4	ARP Proxy DHCP Relay DHCP Server Static Routing RIPv1/v2 OSPFv2 BGPv4 Equivalent Routing Routing Strategy
	IPv6	ICMPv6 ICMPv6Redirection DHCPv6 ACLv6 OSPFv3 RIPv6 BGP4+ Configured Tunnels ISATAP 6to4Tunnels Dual stack of IPv6 and IPv4
	Multicast	IGMPv1/v2/v3 IGMPv1/v2/v3 Snooping IGMP Filter MVR and cross VLAN multicast copy IGMP Fast leave IGMP Proxy PIM-SM/PIM-DM/PIM-SSM PIM-SMv6, PIM-DMv6, PIM-SSMv6 MLDv2/MLDv2 Snooping
Reliability	Loop Protection	EAPS and GERP (recover-time <50ms) Loopback-detection
	Link Protection	Flex link (recover-time <50ms) RSTP/MSTP (recover-time <1s) LACP (recover-time <10ms) BFD
	Device Protection	VRRP host backup 1+1 power hot backup
Maintenance	Network Maintenance	Port real-time, utilization and transmit/receive statistic based on Telnet RFC3176 sFlow analysis LLDP GPON OMCI RFC 3164 BSD syslog Protocol Ping and Traceroute
	Device Management	CLI, Console port, Telnet and WEB SNMPv1/v2/v3 RMON (Remote Monitoring)1,2,3,9 groups MIB

		NTP NGBNView network management
--	--	------------------------------------

## OLT NMS software Detail



## Purchase Information:

Product name	Product description
OP3608	8*PON, 8*GE SFP or 2*10GE SFP+, support double AC/DC power supply
OP3616	16*PON, 8*GE SFP or 2*10GE SFP+, support double AC/DC power supply
360PWRAC	power module for360PWRAC
360PWRDC	power modulefor 360PWRDC

## **Contact us**

### ***ZISA Corporation Limited***

Mail to :sales@zisacom.com.cn

URL: <http://www.zisacom.com>

Specifications are subject to change without notice.

Copyright © ZISA Corp. All rights reserved.

