

# ZISA OP154P

PoE ONU SFU, 1\*XPON (GPON+EPON), 4\*GE PoE+, With PoE Power Adapter 54V, 1.11A @60W, Iron Shell



## I Overview

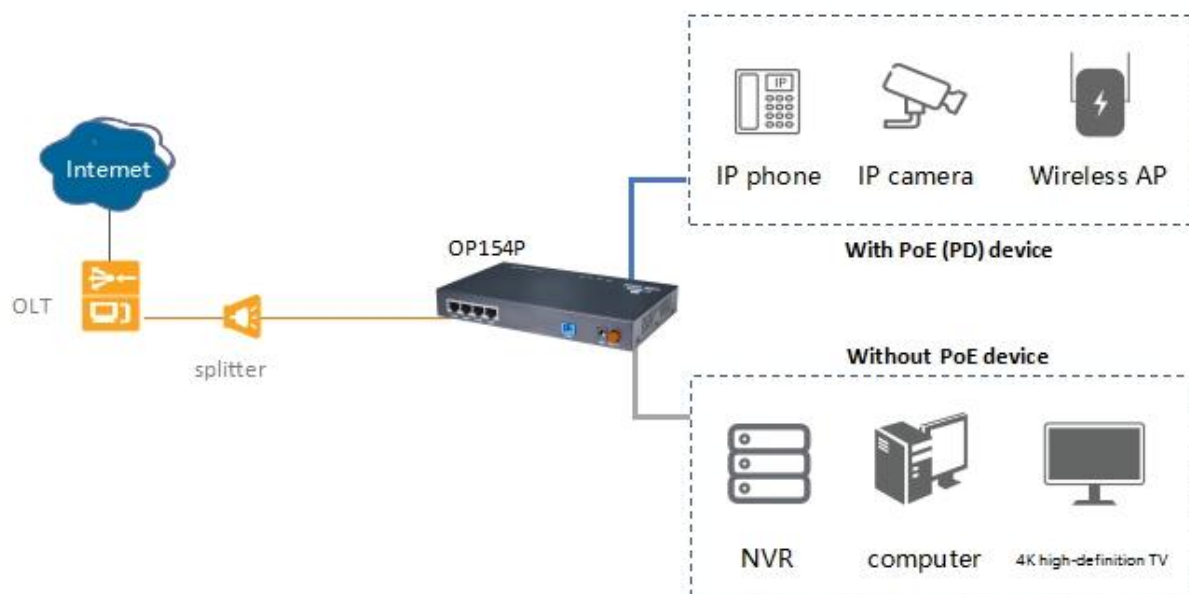
OP154P is a broadband access device specially designed to meet the needs of telecom operators for FTTO (Office), FTTD (Desktop), FTTH (Home), SOHO access, and video surveillance access. This ONU is based on high-performance chip solutions, and also supports Layer 2 functions, providing data service for carrier-grade FTTH applications.

The 4 network ports of this ONU all support PoE function, which can power IP cameras, wireless APs, and other devices through network cables. This ONU has high reliability, is easy to manage and maintain, and can provide QoS guarantee for various data services. It conforms to a series of international technical standards such as IEEE802.3ah and ITU-T G.984.

## I Features

- XPON Dual Mode, Adaptive EPON/GPON
- Detection of illegal ONU
- Firewall Functions
- IEEE802.3at PoE+, Maximum output of 30W per port
- Iron shell, Better heat dissipation and more durable

## I Applications



## I Specifications

### Hardware Parameter

Dimension	205*125*28mm(LxWxH)
Net Weight	NA
Operating Condition	Operating temp: -10 ~ +55°C Operating humidity: 10 ~ 90% (non-condensing)
Storing Condition	Storing temp: -30 ~ +70°C Storing humidity: 10 ~ 90% (non-condensing)
Power Adapter	DC 54V, 1.11A, external AC-DC power adaptor
Power Supply	≤60W
Interfaces	4*GE(PoE+)
Indicators	Power, PON, LOS, SYS, LAN1-4

## Interface Parameter

<b>PON Interface</b>	1XPON port(EPON PX20+ and GPON Class B+)
	SC single mode, SC/UPC connector
	TX optical power: 0 ~ +4dBm
	RX sensitivity: -27dBm
	Overload optical power: -3dBm(EPON) or -8dBm(GPON)
	Transmission distance: 20KM
	Wavelength: TX 1310nm, RX1490nm
<b>LAN Interface</b>	4*GE(PoE+), Adaptive Ethernet interface, RJ45 connector

## Function Data

<b>PON Mode</b>	XPON Dual Mode , Can access mainstream EPON/GPON OLT
<b>Abnormal Protection</b>	Supports detecting illegal ONUs
<b>Firewall Function</b>	Support DDOS, Filtering Based on ACL/MAC/URL
<b>Basic Functions</b>	MPCP discovery and registration
	Mac/oid/Mac+Loid authentication
	Triple Churning
	DBA bandwidth
	automatic detection, configuration, and firmware upgrade
<b>Alarm</b>	SN/Psw/oid/oid+Psw authentication
	Dying Gasp
	port loop detection
<b>LAN</b>	Eth Port Loss
	Supports port rate restrictions
	Supports loop detection
	Supports flow control
	Supports storm control
<b>VLAN</b>	Supports PoE+/PoE, IEEE 802.3at/af, with a maximum of 30W per port
	VLAN tag mode
	VLAN transparent mode
<b>Multicast</b>	VLAN trunk mode (up to 8 vlan)
	IGMPv1/v2/Snooping
	Up to 8 multicast vlan
<b>QOS</b>	Up to 64 multicast groups
	Supports 4 queues
	Supports SP and WRR
	Supports 802.1P

<b>Management</b>	CTC OAM 2.0 and 2.1
	ITU-T 984. x OMCI
	Support for WEB
	Support for TELNET
	Support for CLI

## I Ordering Information

Product Model	Product Description	Accessories
OP154P	4GE (PoE+), Iron Shell	DC 54V, 1.11A, external AC-DC power adaptor

## I ZISA Technologies Inc.

[www.zisacom.com](http://www.zisacom.com)

Specifications are subject to change without notice.

Copyright © ZISA All rights reserved.

**ZISA**® and ZISACOM are trademarks or registered trademarks of ZISA Technologies Inc.

